



GAT MONTHLY MEMBERSHIP PROGRESS REPORT

Results as of: 7/31/2021

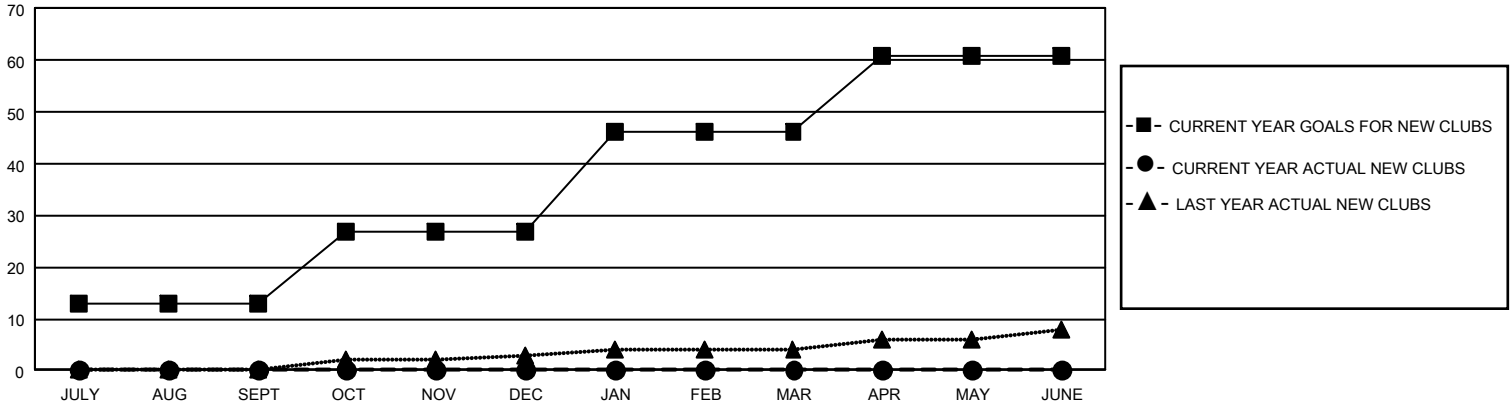
GAT Constitutional Area 5 - Japan

REPORT DOES NOT INCLUDE CLUBS IN UNDISTRICTED AREAS.

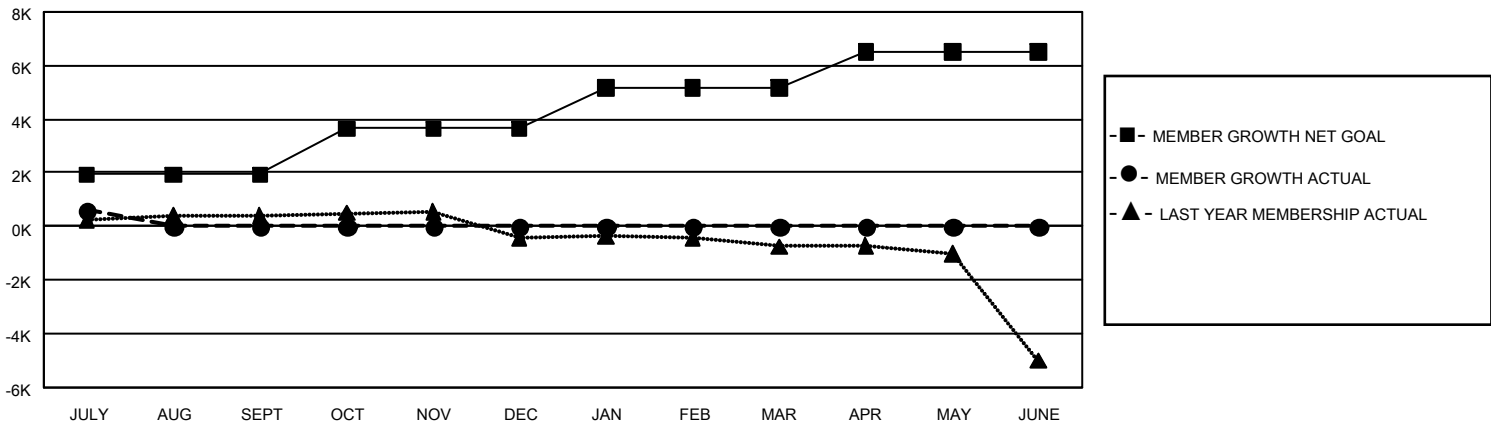
Clubs			
RESULTS FOR 2021-2022			
QUARTER	NEW CLUB GOAL	NEW CLUBS	DROPPED CLUBS
JULY/AUG/SEPT	39	0	4
OCT/NOV/DEC	42	0	0
JAN/FEB/MAR	57	0	0
APR/MAY/JUNE	45	0	0

Members			
RESULTS FOR 2021-2022			
QUARTER	MEMBER GROWTH NET GOAL	MEMBER GROWTH ACTUAL	DROPPED MEMBERS ACTUAL (including transfers)
JULY/AUG/SEPT	1924	1,331	642
OCT/NOV/DEC	1716	0	0
JAN/FEB/MAR	1538	0	0
APR/MAY/JUNE	1337	0	0

GOALS AND ACTUAL NEW CLUBS CUMULATIVE



GOALS AND ACTUAL MEMBERS CUMULATIVE



DROPPED CLUBS: 4	706 CLUBS OF 2,850 ADDED 1 OR MORE NEW MEMBERS	<u>GENDER DISTRIBUTION</u>	
<u>DROPPED MEMBERS</u>		MALE	78,066 (76.55%)
DECEASED	57	FEMALE	23,917 (23.45%)
CLUB CANCELLED	0	TOTAL FAMILY UNIT MEMBERS	35,819
OTHER	585	FAMILY MEMBERS PAYING HALF DUES	19,733
TOTAL	642		

[CLICK HERE FOR CUMULATIVE MEMBERSHIP DATA](#)